

Eligibility & Assessment of LTC needs in Japan

Mrs. Lee Leung Man Ying

Home Manager Wo Ping C&A Home

Haven of Hope Christian Service

4/10/2002

介護

Kaigo

Long Term Care

保険

Hoken

Insurance

Japan Study Trip



Eligibility & Assessment

Service Content & Delivery Model

Quality Measurement

Financing

Eligibility & Assessment

Service Content & Delivery Model

Quality Measurement

Financing

Eligibility

Type 1:
aged 65 years and over



Type 2:
aged 40 to 64 years

15 designated diseases

1) Amyotrophic lateral sclerosis (ALS)

肌萎縮性脊髓側索硬化

2) Ossification of posterior longitudinal ligaments

骨化

3) Osteoporosis resulting in bone fractures

骨質疏鬆引致骨折

4) Shy-drager syndrome 神經性變

5) Early onset dementia 早老性痴呆

15 designated diseases

6) Spinal cerebellar degeneration

脊髓小腦變性

7) Spinal canal stenosis 脊柱管狹窄

8) Premature senility 早老症

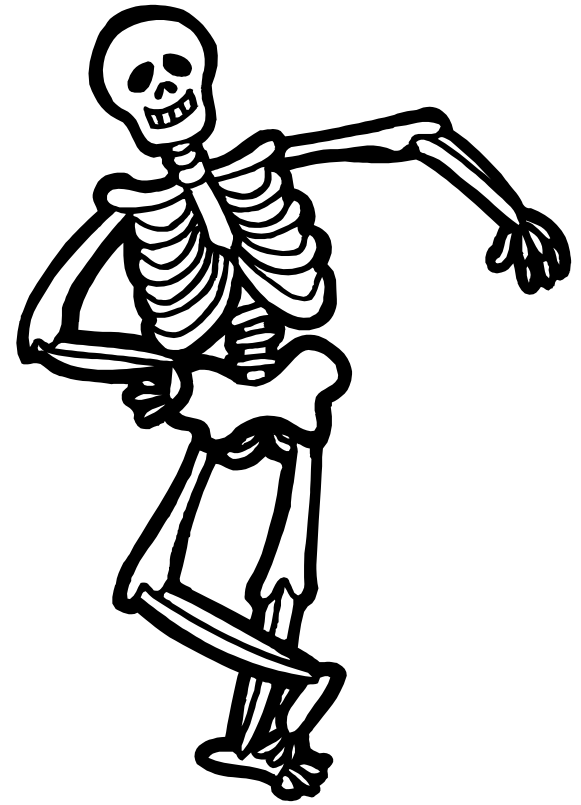
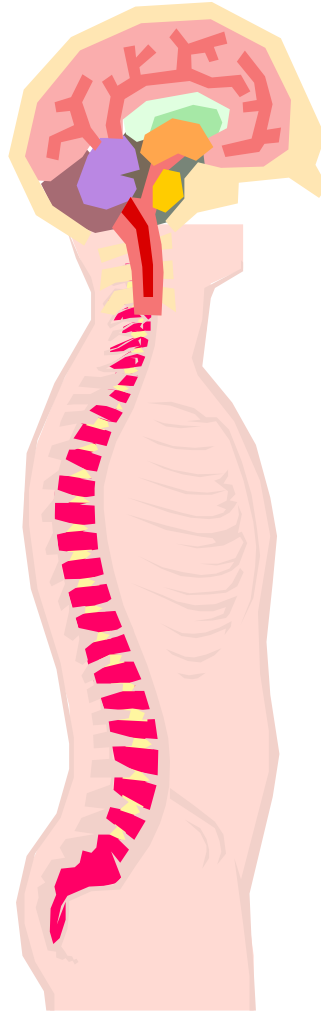
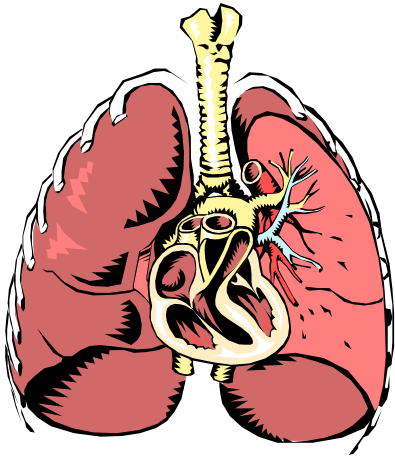
9) Diabetic neuropathy 糖尿病性神經障礙

10) Cerebrovascular disease 腦血管意外損傷

15 designated diseases

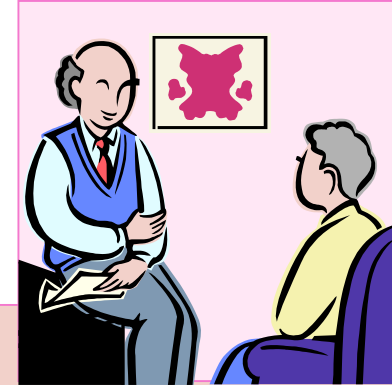
- 11) Parkinson's disease 帕金森症
- 12) Arteriosclerosis obliterans 閉塞性動脈硬化
- 13) Chronic articular rheumatism 風濕性關節炎
- 14) Chronic obstructive pulmonary disease
慢性氣道阻塞
- 15) Osteoarthritis with significant deformation
in both knees joints or in hip joints 骨關節炎

15 designated diseases



Assessment

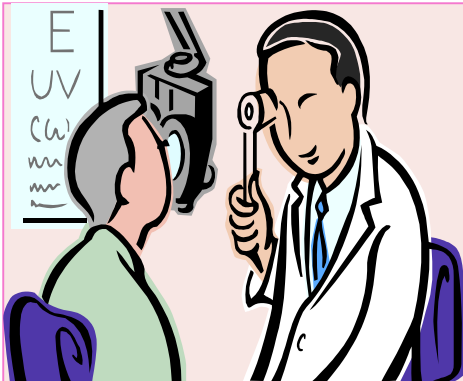
Submission
of
Application



Home
Visit



Computerisation



Doctor's
recommendation



Nursing
Care
Authorisation
Board
meeting

Assessment Content

- 1) Joint Movement
- 2) Movement
- 3) Complicated Movement
- 4) Special Care
- 5) Self Care
- 6) Communication & Perception
- 7) Problematic Behaviour

Assessment Content

1) Joint Movement

- paralysis of limbs
- limitation of range of joints

Assessment Content

2) Movement

- moving one hand up to chest
- rolling in bed
- raising the upper body up from lying
- maintaining sitting position with both feet on the floor
- maintaining sitting position with both feet off the floor
- walking
- moving

Assessment Content

3) Complicated Movement

- standing up from sitting
- standing upright with both feet
- standing upright with one foot
- getting into bath tub
- bathing oneself

Assessment Content

4) Special Care

- skin lesion
- eating problem
- swallowing problem
- incontinence –urination
- incontinence - defecation
- needing care after urination
- needing care after defecation

Assessment Content

5) Self Care

- personal hygiene
- tooth brushing
- face washing
- hair washing
- nail cutting
- changing of clothing
- buttoning & unbuttoning

Assessment Content

5) Self Care

- putting on and taking off the shirt
- putting on & taking off the pants
- putting on and taking off socks
- cleaning of room
- taking medicine
- money management

Assessment Content

6) Communication & Perception

- vision
- hearing
- response to the direction
- understanding daily routine
- answering birthday and age correctly
- recalling what he did before the interview
- answering one's name correctly
- knowing the current season
- telling where he is

Assessment Content

7) Problematic Behaviour

- | | |
|---|---|
| <ul style="list-style-type: none">- amnesia- delusion- emotional unstable- wandering- restless- insomnia- violent behaviour- collect things without permission | <ul style="list-style-type: none">- cannot handle fire properly- conduct unhygienic behaviours- putting unedible things into mouth- improper sexual expression |
|---|---|

Assessment Content

Specific Medical Treatment

- IV Infusion
- dialysis
- stoma care
- oxygen therapy
- respirator
- tracheotomy

- pain management
- tube feeding
- urinary catheter care
- treatment of pressure sore
- monitoring of vital signs

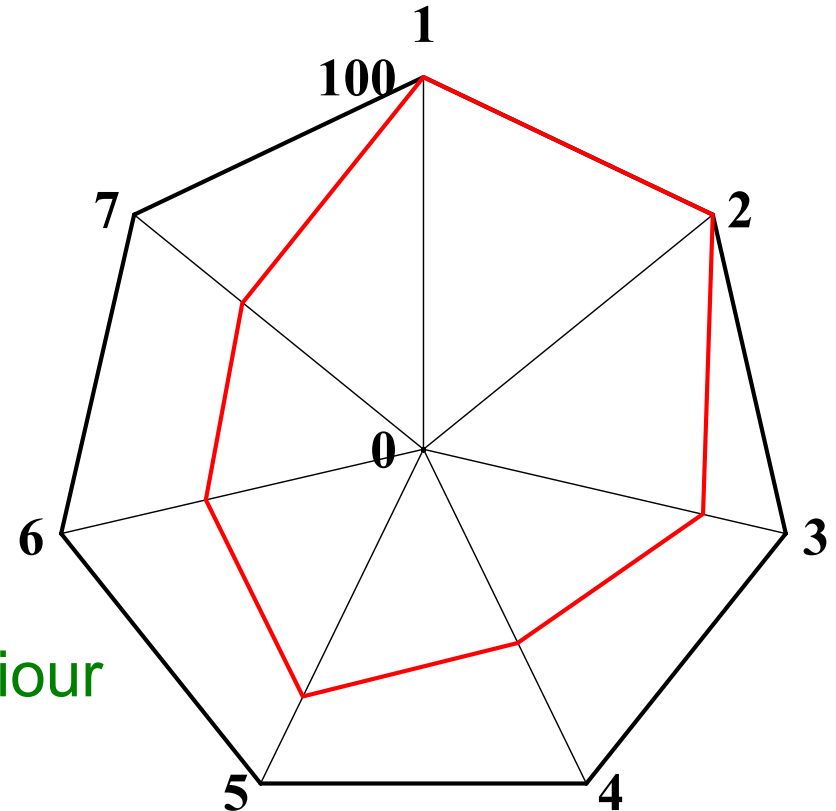
Professional Medical opinion

- current status of medical services provided
- diagnosis
- stability of the disease
- past history and treatment
- laboratory and Xray finding
- special medical treatment
- current findings of physical
- and psychological status
- professional recommendation
- to caregiver

Example of Assessment Summary

Level of Care

- 1) Joint Movement
- 2) Movement
- 3) Complicated Movement
- 4) Special Care
- 5) Self Care
- 6) Communication
- 7) Problematic Behaviour



Group1	Group2	Group3	Group4	Group5	Group6	Group7
100	100	77.9	57.9	73.8	59.9	62.5

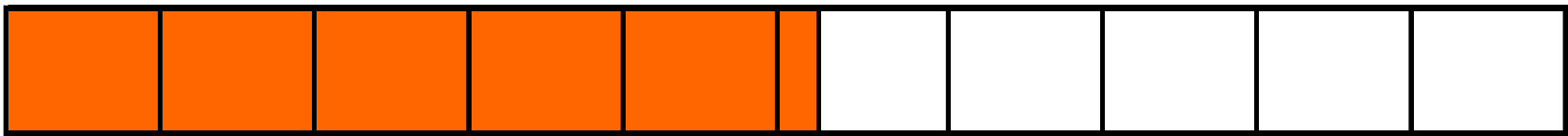
Example of Assessment Summary

Level of Independence

		cognitive					
		IND	I	II	III	IV	V
physical	IND						
	1						
	2						
	3						
	4						

Example of Assessment Summary

Nursing care time



52.4 min

Eating	Elimination	Movement	Hygiene	Indirect care	Handling of behaviour	Physical training	Special care
0.7	2.4	1.0	9.2	7.3	20.3	4.0	7.5

Eligibility & Assessment

**Service Content & Delivery
Model**

Quality Measurement

Financing

Thank you